

North Central Montana

# RC&D

RESOURCE

CONSERVATION

& DEVELOPMENT

*Partnerships Serving America's Communities*



The Hi-Line area has a variety of resources and our vision is to maintain our Montana lifestyles while creating opportunities for our youth and future generations.

Our goal is to provide assistance for Community Development. Land and Water Management and Resource Conservation.

The North Central MT RC&D Council *develops partnerships* between agriculture producers and community leaders to create new markets and opportunities for their products. Economic benefits include improved productivity, enhanced economic viability and job creation, all of which move America toward a more vibrant rural economy.

## Students Who Build

### Grant helps purchase Tools for Designing

Chester, MT was the recipient of the national grant money located and awarded by North Central RC&D Area Inc. The school worked together with many groups to make this project happen and was very successful.

See this recent article printed in the [Liberty County](#)

[Times:](#)

CJI students successfully completed their first construction project for Western Lumber at their school. The Career and Technology Education (CTE) program at CJI partnered with Western Lumber to build a 12' w x 16' l x 10' h shed. This project would not have been possible without Western Lumbers material and technical support. Western Lumber's Dale Lalum and Reynier Malan recognized CJI student efforts to produce a quality product by presenting a cordless tool set to the CTE program. This is a testimony to Western Lumber's and CJI's belief that students can build a quality product with training and little or no construction experience.

The top two students (Lonnie Cady, Michelle Spicher) were presented with tools in recognition of their quality work. Special thanks to Brad Romain and Michelle Spicher, for their work on the computer drawings.

Western Lumber also loaned a completed shed to CJI for students to measure and create working drawings using the computer (CAD) and printed on our new wide format printer.

As each set of drawings were completed, students used these drawings to guide them as they built the shed. Students measured, cut, staged and installed floor joists, walls, roofs, rafters, sheeting, metal sheeting, double door, window, and electrical wiring. Students turned the completed shed over to Western Lumber for sale. This shed project represents the first time that CJI students experienced the design and build process to complete a construction project.

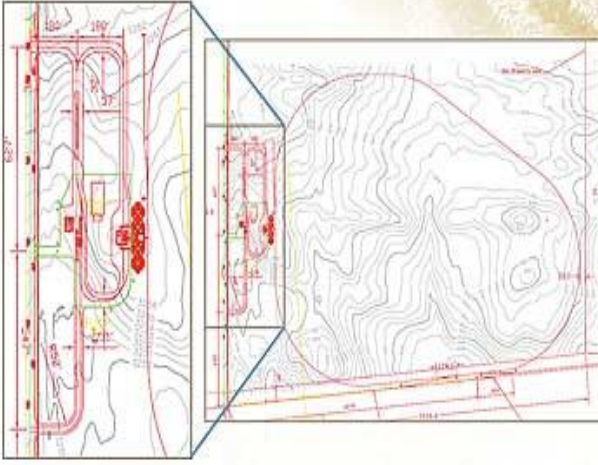


Student at work this November

This construction project would not have been possible without the support of CJI Administration, Western Lumber and Cicon Associates participating in the grant process in 2010. The Career & Technology Education program (formerly Industrial Arts) **received a grant (Spring 2010) from The North Central Montana Resource Conservation and**

**Development Areas awarding CJI monies from a Home Depot Grant that allowed CJI to purchase survey equipment, wide format printer, updated programs, construction tools, and other equipment to improve Construction, Welding, and CAD (Computer Aided Design) instruction.** These program critical tools allowed CJI to begin this construction education component that will eventually team with the Montana Colleges of Technology Curriculum and contribute to work force development. Special thanks to the CJI Career & Technology Education Students and Administration, Western Lumber, Cicon Associates, and the **North Central Montana Resource Conservation and Development Areas**, for coming together in partnership to make construction education possible.

## SITE LAYOUT

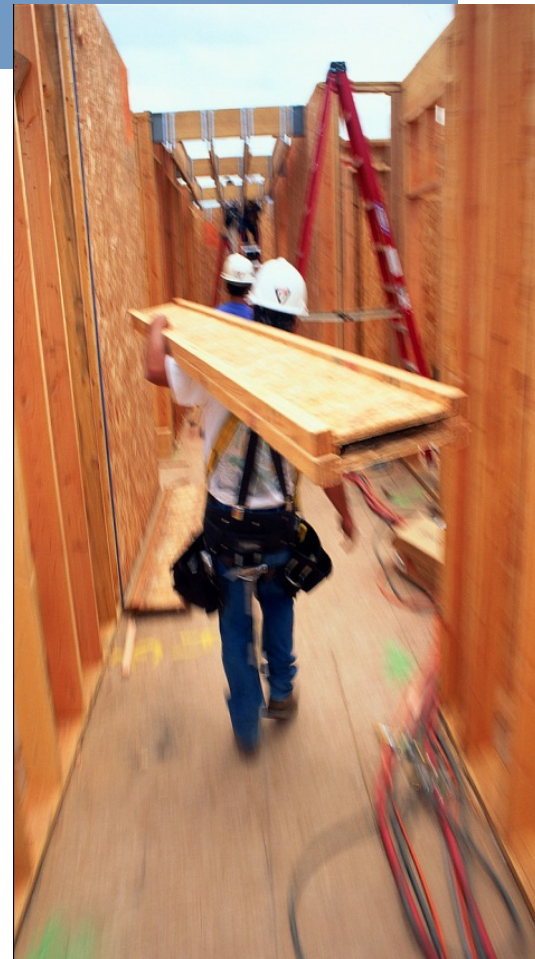


Example of CAD drawing

## Youth Build

## MSU Northern

This is a MSU-Northern project that asked North Central Montana RC&D for some assistance. The project involves a program that was set up at MSU-Northern to assist youth without a high school degree or without skills to advance to the college level courses. This program started in the fall of 2009 and had about 90 applicants. The program is set up to teach construction skills and requires the participants to obtain at least a GED to advance. MSU-Northern is working with Stone Child Community College where they supervise a group of students on the Rocky Boy Reservation. Both groups of students are building a complete house. The students at MSU-Northern are building a modular structure to be moved to a foundation already set up by the Rocky Boy Housing Authority. The students at Stone Child Community College are building a house on site for the Rocky Boy Housing Authority. The Housing Authority is providing material for the construction. These students will learn construction skills including electric wiring, plumbing, site preparation, roofing, flooring, and all the math and science that go along with housing construction. A group of these students attended an RC&D meeting and gave a report on the project as it progressed. North Central Montana RC&D assisted in providing a grant from Home Depot to purchase a Van Trailer to store materials and provide an on the job office set up for this project, and to be used as a recruitment tool for future Youth Build projects in the area. The program was established with the assistance of many partners not mentioned in this article, and North Central Montana RC&D is proud to be included in that list. This program has already had a huge effect on the region and more importantly on the lives of the many young people who are an important resource in the Hi-line region.





## HOMEBUYERS EDUCATION CLASSES

Homebuyer Education has been and continues to be one of the most dynamic programs that North Central Mt. RC&D offers people in our 10-county rural area. It has taken many twists & turns in 2010. When the First-time Homebuyer government stimulus program ended, we feared that HB Education would see a fall in class participation. However, it provided more *awareness for the need* for education. State & Federal agencies introduced lots of new information to educate and rescue homebuyers. Our clients were learning not only *how to purchase* a home, but *how to keep* their home. We also saw changes in the way we track our client's personal information and In-Kind dollars for presenting partners.

Homebuyer Education changes with the times, always updating information needed by the people who are brave enough to meet the challenge of purchasing a home.



## The Museum of the Plains Indian

The **Museum of the Plains Indian** in Browning, Montana, holds artifacts and artworks from at least 20 northern Plains Native American tribes of the United States and Canada. Established in 1941 as a U. S. Bureau of Indian Affairs facility, it is currently managed by the U. S. Department of the Interior's Indian Arts and Crafts Board. Clothing, artwork, games, and other artifacts from the early 20th century are displayed, with dioramas of pre-reservation life for these people. There is also a wonderful collection of 20th century-to-the-present day Native artwork. The **Friends of the Museum of the Plains Indian** is a 501(c)(3) organization and project of the North Central (MT) RC&D, Inc.

Since 2004 the Friends have worked to encourage tribal artists and craftspeople, support Museum artist exhibits and a visitor film, and maintain Congressional appropriations for this important program. The group generally helps the Museum function with minimal staffing and an aging but solid facility owned by the U. S. Bureau of Indian Affairs in the middle of the Blackfeet Reservation.

In 2007 the Friends held a workshop to vision the Museum in 2025, as well as a week-long educational program using Museum collections to help teach traditional games. In 2009 they funded a remastering of *Winds of Change*, the Museum's visitor film; and in 2011 they are facilitating an 80th anniversary Conference on American Indian Sign Language. If you would like to learn more please call Ruthann at (406) 216- 2676.

