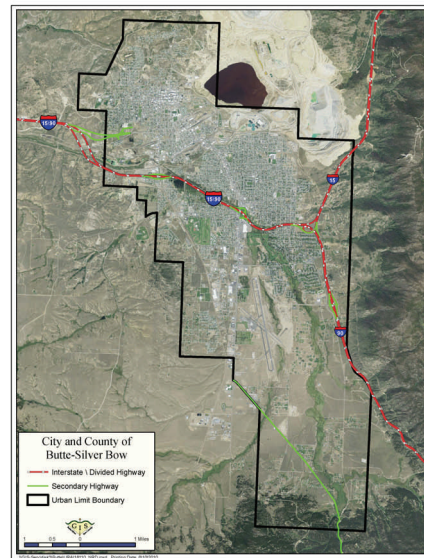


Butte Green Geo-spatial Infrastructure Analysis

Headwaters RC&D

“Improving the economic and social well-being of the region through conservation, development, and proper use of natural and human resources”



Through a partnership with the Montana Department of Natural Resources and Conservation, Headwaters is working with a Geographic Information System mapping services contractor to provide Butte with an analysis of its urban forest both present and future potential. Geodata Services Inc., using existing satellite imagery and a program called CommunityViz, will produce maps and “what if” scenarios that offer the community and city planners an interactive tool to assist with the decision making process of prioritizing the city’s urban forestry efforts. The program outputs include the social and economic benefits realized through a community urban forest both now and into the future. A detailed sketch of the program output can be found at Geodatawiki.com

Headwaters RC&D
65 East Broadway
Butte, MT 59711

Phone: 406-782-7333
Fax: 406-782-9675
www.headwatersrcd.org