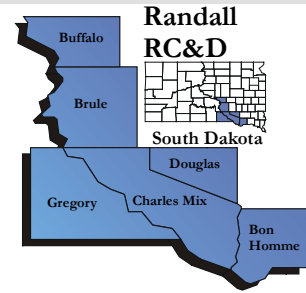


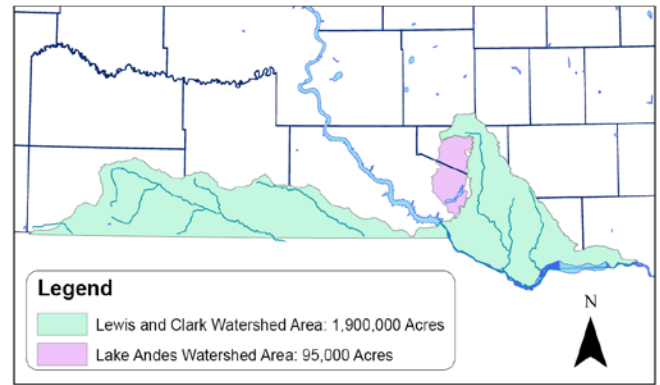
# Randall RC&D – Brief Success Story - FY2009



## Lewis & Clark Watershed Implementation Project – Segment II

Formally known and subtitled the “Segment I Expansion”, this project of the council positively impacts the greatest number of people in our part of South Dakota. The project area now consists of 2 million acres encompassing parts of ten counties and eleven partner Conservation Districts. In 2009, an EPA grant and a South Dakota Board of Water and Natural Resource grant for over \$800,000 were secured by the Council. This will allow the continued implementation of goaled conservation practices in the watershed for 2 more years. In 2009 over \$300,000.00 of project funds were spent on cost share practices. 229 landowners applied project goaled Best Management Practices. L&CWIP cost share funds have mostly been used in combination with NRCS EQIP funds allowing more landowners to implement needed practices and complete practices they otherwise would not have been able to afford. Major implementation funding is provided through a Clean Water Act Section 319 Grant

## Lewis and Clark Implementation Project Area



## Lewis and Clark Watershed Implementation Project Milestone Table Three year Targeted/Expected goals and actual Implemented goals 2006 to 2009

<b>BMP</b>	<b>Unit</b>	<b>Total Expected</b>	<b>Total Implemented</b>
Ag Waste System	Engineering Services	8	22
Ag Waste System	Nutrient Management Plans	8	33
Ag Waste System	System Installation	8	19
Critical Area Planting	ac Cropland BMPs	750	24,502
Critical Area Planting	ac Filter Strips	75	4329
Critical Area Planting	ac Grassed Waterways	15	99
Grazing Management	ac Grass seeding	350	379
Grazing Management	ac Grazing Systems	1500	8859
Grazing Management	ac Pasture/Grassland Buffers	15	124
Grazing Management	LF Fencing	15,000	63,847
Grazing Management	LF Pipelines	7500	95,888
Grazing Management	Ponds/dugouts	5	3

Taking a program neutral approach has helped make the successful in working with landowners and vastly exceeding the original goaled practice numbers. Most of the credit for the large number of practices implemented goes to the landowners for seeing the need to do their part in reducing sediment and improving water quality and because of the interagency coordination between the conservation partnership. Randall RC&D now has two conservationists, working under an agreement with the SD Association of Conservation Districts. They are assisting with field work, contracting and information and educational activities.



*Pipelines and troughs help keep cattle out of riparian areas and the Missouri River*



*Riparian forest buffers filter nutrients and sediments*